

AM7515MT4A



Brand:
Product Code: AM7515MT4A

Short Description

5 Megapixel resolution
415-470x magnification
Coaxial and brightfield illumination
Flexible LED Control (FLC)
Automatic Magnification Reading (AMR)

Description

The AM7515MT4A is a 5MP Dino-Lite Edge Series microscope that has a magnification range of 415x - 470x with built-in coaxial illumination. By using the Flexible LED Control (FLC), this model is capable of switching between or mixing, brightfield and coaxial illumination.



USB 2.0



Measurement
functionality



Adjustable
~400x-470x



Flexible LED
Control FLC



Automatic
Magnification
Reading (AMR)



Magnification
lock

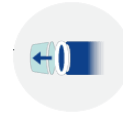


5 megapixel
2592 x 1944

Metal
housing



8 White LEDs
switchable



Exchangeable
cap

The coaxial illumination technique reveals details that are very difficult to see under normal light, for example when inspecting wafer plates, microchips or other microelectronics. The AM7515MT4A includes the Automatic Magnification Reading (AMR) feature which automatically detects and displays the magnification in the included Dino-Lite software. These unique features make the Dino-Lite AM7515MT4A a great inspection tool for material analysis, electronics inspection, or any similar application that requires high magnification, coaxial illumination, versatility and mobility.

The Dino-Lite AM7515MT4A is bundled with the user-friendly DinoCapture 2.0 software for Windows. For this model it includes functions such as Automatic Magnification Reading (AMR), Flexible LED Control (FLC), calibration, measurement, capturing & annotating images, and recording video. When focusing at such high magnification it is recommended to use a high-precision stand. The Dino-Lite RK-10A for example is a great add-on, it is a sturdy and stable high-end stand solution constructed of resilient stainless steel and lightweight aluminum and offers a very precise fine-focus adjustment..

Working distance/field of view/depth of field

MAGNIFICATION RATE	WORKING DISTANCE*	FIELD OF VIEW(X)	FIELD OF VIEW(Y)	DEPTH OF FIELD
Listed values may differ slightly	*Without front cap			Unit = mm
415	6.0	0.951	0.697	0.03
420	7.3	0.926	0.680	
430	8.0	0.905	0.664	
440	8.8	0.884	0.648	

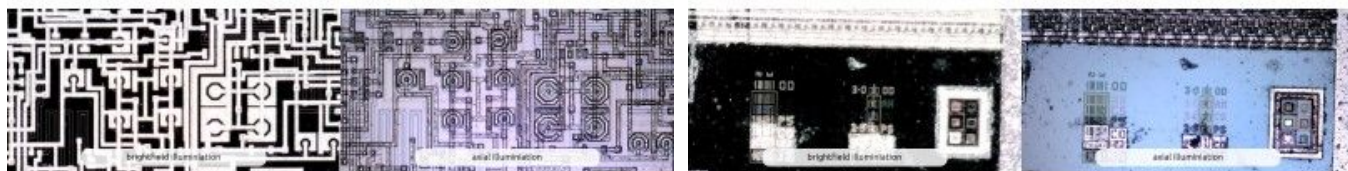
450	10.0	0.876	0.636	
460	11.3	0.847	0.621	
470	11.8	0.828	0.608	0.045

Specification

Lighting	
Light/ LED type	White
Number of LEDs	8
LED on/off switchable:	Yes
Infrared filter	IR cut-filter >650 nm
Diffuser available	No
Emission filter	No
Polarizer	No
Optics	
Magnification	415-470x
Macro zoom	No
Working distance	Standard
Lens type	Glass with anti-reflection coating
Sensor	
Sensor type	CMOS
Resolution	5 Megapixel (2592x1944)
Maximum frame rate	30 fps (max 20fps video recording)
Compatibility	
Interface	USB 2.0
Operating system	Windows 7, 8, 10 & 11, MacOS 10.12 and up
Software	DinoCapture 2.0 (Windows), DinoXcope (Mac OS)
Supported image formats (Windows)	BMP, GIF, PNG, JPG, TIF, RAS, PNM, TGA, PCX, MNG, WBMP, JP2, JPC, PGX
Supported video formats (Windows)	WMV, FLV, SWF
Supported image formats (MacOS)	JPEG, PNG
Supported video formats (MacOS)	MOV (max 1.3MP)
Imaging standards	DirectShow, UVC
Wifi	Wireless-ready, requires the WF-10 WiFi streamer (optional)
Housing	
Housing material	Metal housing
Magnification lock	Yes
Dimensions	10.7cm (L) x 3.2cm (D)

Weight	139g
Cable length	1.8m
Features	
Special feature	Automatic Magnification Reading (AMR), Flexible LED Control (FLC), Coaxial illumination
Measurement	Yes
Calibration	Yes
Microtouch sensor	Yes
ESD safe	Yes
Information	
Package contents	Microscope, Carry pouch, software CD, user manual, quick guide, calibration target, front cover box
Warranty information	2 years European warranty
Regulatory approval	CE, FCC, ROHS
Price range	€1000,00 - €1200,00

Product Gallery



Dino-Lite
Built in Axial Illumination

