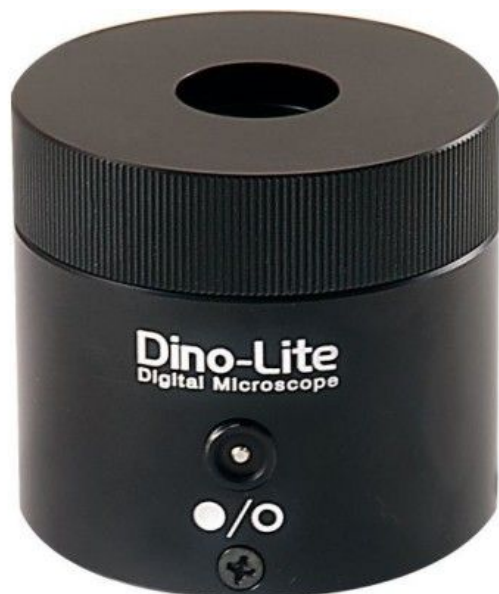


# BL-CDW



**Marke:** Dino-Lite  
**Artikelnummer:** BL-CDW

## Short Description

Brightfield/ Darkfield Backlight illuminator

## Beschreibung

The Dino-Lite backlight stage BL-CDW allows two different types of lighting: brightfield and darkfield. In the brightfield mode, the light is transmitted from below the sample that shows up vividly showing the form and structure of the specimen on a bright background. With darkfield illumination, the transmitted light will not reach the microscope and will therefore not be part of the image.

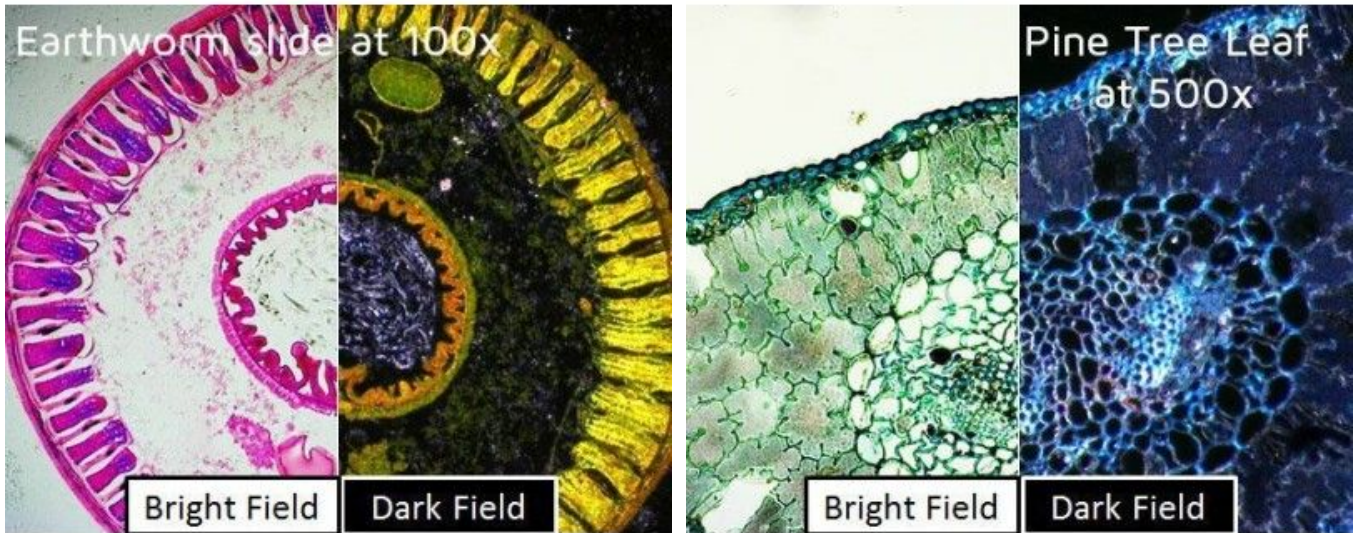
The image will show bright objects on an almost black background. This type of light is not only suitable for prepared specimen but also for live specimen such as flagellum, the pseudopod movement, spirochete and more. Both types of illumination allow for high contrast, clear images and adds a whole new dimension to the Dino-Lite digital handheld microscopes with magnifications over 100x.

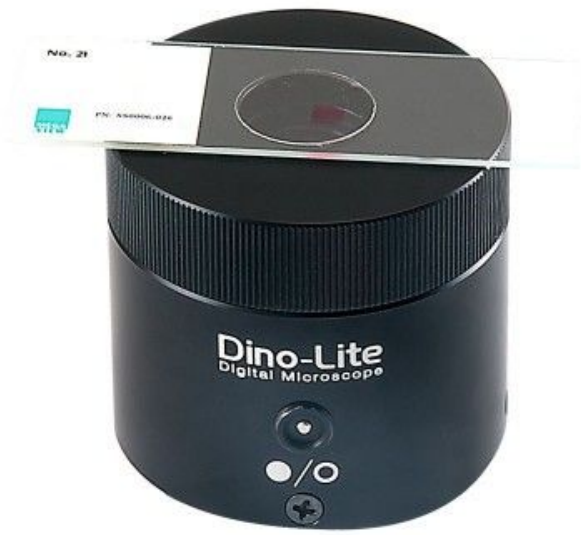
## Spezifikation

Compatibility	
Compatible with:	All Dino-Lite models, except long working distance models
Housing	
Dimensions	5.1cm (H) x 5.43cm (D)

Weight	178 g
Features	
ESD safe	No
Information	
Package contents	BL-CDW, power adapter
Warranty information	2 years European warranty
Accessory range:	Light and control
Price range	€250,00 - €400,00

## Product Gallery





No. 21

FN: 4000x0.72

**Dino-Lite**  
Digital Microscope