

# AM7515MT4A



**Marke:**

**Artikelnummer:** AM7515MT4A

## Short Description

5 Megapixel resolution

415-470x magnification

Coaxial and brightfield illumination

Flexible LED Control (FLC)

Automatic Magnification Reading (AMR)

## Beschreibung

The AM7515MT4A is a 5MP Dino-Lite Edge Series microscope that has a magnification range of 415x - 470x with built-in coaxial illumination. By using the Flexible LED Control (FLC), this model is capable of switching between or mixing, brightfield and coaxial illumination.



USB 2.0



Measurement  
functionality



Adjustable  
~400x-470x



Flexible LED  
Control FLC



Automatic  
Magnification  
Reading (AMR)



Magnification  
lock

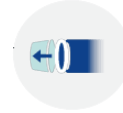


5 megapixel  
2592 x 1944

Metal  
housing



8 White LEDs  
switchable



Exchangeable  
cap

The coaxial illumination technique reveals details that are very difficult to see under normal light, for example when inspecting wafer plates, microchips or other microelectronics. The AM7515MT4A includes the Automatic Magnification Reading (AMR) feature which automatically detects and displays the magnification in the included Dino-Lite software. These unique features make the Dino-Lite AM7515MT4A a great inspection tool for material analysis, electronics inspection, or any similar application that requires high magnification, coaxial illumination, versatility and mobility.

The Dino-Lite AM7515MT4A is bundled with the user-friendly DinoCapture 2.0 software for Windows. For this model it includes functions such as Automatic Magnification Reading (AMR), Flexible LED Control (FLC), calibration, measurement, capturing & annotating images, and recording video. When focusing at such high magnification it is recommended to use a high-precision stand. The Dino-Lite RK-10A for example is a great add-on, it is a sturdy and stable high-end stand solution constructed of resilient stainless steel and lightweight aluminum and offers a very precise fine-focus adjustment..

### Working distance/field of view/depth of field

| MAGNIFICATION RATE                       | WORKING DISTANCE*  | FIELD OF VIEW(X) | FIELD OF VIEW(Y) | DEPTH OF FIELD   |
|--|--------------------|------------------|------------------|------------------|
| <b>Listed values may differ slightly</b> | *Without front cap |                  |                  | <b>Unit = mm</b> |
| 415                                      | 6.0                | 0.951            | 0.697            | 0.03             |
| 420                                      | 7.3                | 0.926            | 0.680            |                  |
| 430                                      | 8.0                | 0.905            | 0.664            |                  |
| 440                                      | 8.8                | 0.884            | 0.648            |                  |

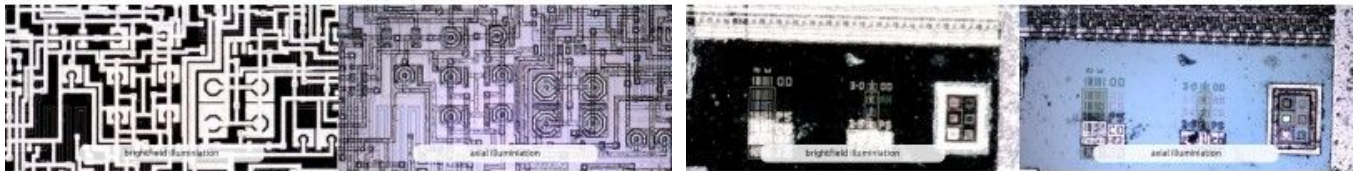
|     |      |       |       |       |
|-----|------|-------|-------|-------|
| 450 | 10.0 | 0.876 | 0.636 |       |
| 460 | 11.3 | 0.847 | 0.621 |       |
| 470 | 11.8 | 0.828 | 0.608 | 0.045 |

## Spezifikation

| Lighting                          |   |
|-----------------------------------|---|
| Light/ LED type                   | White   |
| Number of LEDs                    | 8   |
| LED on/off switchable:            | Yes   |
| Infrared filter                   | IR cut-filter >650 nm   |
| Diffuser available                | No  |
| Emission filter                   | No  |
| Polarizer                         | No  |
| Optics                            |   |
| Magnification                     | 415-470x  |
| Macro zoom                        | No  |
| Working distance                  | Standard  |
| Lens type                         | Glass with anti-reflection coating                                    |
| Sensor                            |   |
| Sensor type                       | CMOS  |
| Resolution                        | 5 Megapixel (2592x1944)   |
| Maximum frame rate                | 30 fps (max 20fps video recording)                                    |
| Compatibility                     |   |
| Interface                         | USB 2.0   |
| Operating system                  | Windows 7, 8, 10 & 11, MacOS 10.12 and up                             |
| Software                          | DinoCapture 2.0 (Windows), DinoXcope (Mac OS)                         |
| Supported image formats (Windows) | BMP, GIF, PNG, JPG, TIF, RAS, PNM, TGA, PCX, MNG, WBMP, JP2, JPC, PGX |
| Supported video formats (Windows) | WMV, FLV, SWF   |
| Supported image formats (MacOS)   | JPEG, PNG   |
| Supported video formats (MacOS)   | MOV (max 1.3MP)   |
| Imaging standards                 | DirectShow, UVC   |
| Wifi                              | Wireless-ready, requires the WF-10 WiFi streamer (optional)           |
| Housing                           |   |
| Housing material                  | Metal housing   |
| Magnification lock                | Yes   |
| Dimensions                        | 10.7cm (L) x 3.2cm (D)  |

|                      |   |
|----------------------|---|
| Weight               | 139g  |
| Cable length         | 1.8m  |
| <b>Features</b>      |   |
| Special feature      | Automatic Magnification Reading (AMR), Flexible LED Control (FLC), Coaxial illumination             |
| Measurement          | Yes   |
| Calibration          | Yes   |
| Microtouch sensor    | Yes   |
| ESD safe             | Yes   |
| <b>Information</b>   |   |
| Package contents     | Microscope, Carry pouch, software CD, user manual, quick guide, calibration target, front cover box |
| Warranty information | 2 years European warranty   |
| Regulatory approval  | CE, FCC, ROHS   |
| Price range          | €1000,00 - €1200,00   |

## Product Gallery



Dino-Lite  
Built in Axial Illumination

